

INVESTIGATION REPORT FOR BURSTING OF 516378500 LIME 2 FB AMERICA

**DIRECT CAUSE
METHOD (PROCESS)**

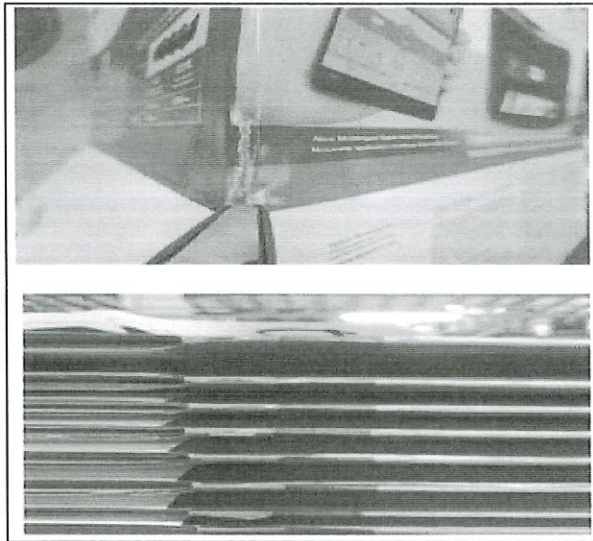
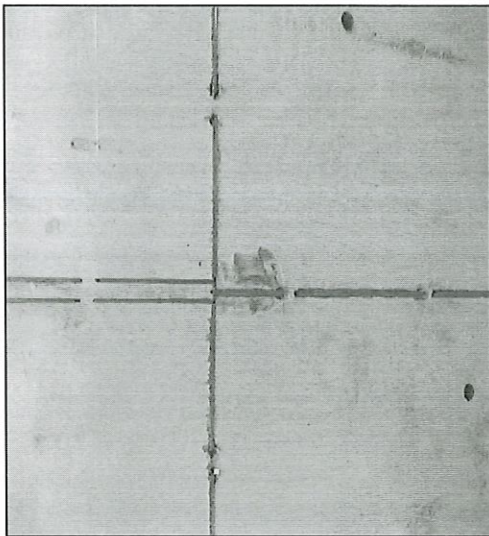
W1: Laguna blade transfer to Lima

> Condition of blade has marking of grinding

W2: During running there is occurrence of bursting

> Due to over grinding

W3: The creasing blade was not in good condition.



PRODUCTION ACTION PLAN

> For endorsement excel monitoring for tooling custodian (History Identification)

> Request of blade.. To follow up with Sales

TOOLING REPAIR MONITORING							
DATE	TOOL	TOOL IDENTIFICATION	REASON OF REPAIR	DETAILS OF REPAIR	TOOLING IN CHARGE	ILLUSTRATION	REMARKS

Prepared by:

PRODUCTION IE

Reviewed by:

Noemi Cepeda
PRODUCTION SUPERVISOR